



Massachusetts
Alliance of
Portuguese
Speakers

ANNUAL REPORT RELATÓRIO ANUAL 2009

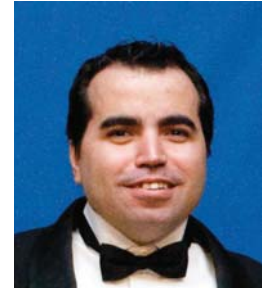


MAPS

MAPS

Queridos amigos e colaboradores,

NUMA ÉPOCA EM QUE ORGANIZAÇÕES sem fins lucrativos em todo o país estão demitindo funcionários, reduzindo serviços e analisando angustiadamente em seus emails cortes de verbas, você poderia esperar uma série de medidas dolorosas nesta carta anual à comunidade. Mas quando olhamos para o último ano fiscal, nós na verdade nos sentimos muito orgulhosos de tudo o que a MAPS conseguiu realizar e da sólida posição financeira que nossos auditores encontraram para começarmos o Ano Fiscal de 2010.



Joseph J. Vasconcelos

Nós fechamos o mês de junho com um saldo positivo de \$150,000 que nos ajudará a passar pela próxima série de cortes a ser anunciada pelo governo do estado nos próximos meses. Isso é resultado da incrível dedicação e apoio de nossos funcionários, diretores, voluntários, financiadores e doadores. Mesmo tendo sofrido cortes em muitos programas importantes, eles simplesmente se comprometeram em trabalhar mais horas, doar um pouco mais de seu próprio tempo e dinheiro, já limitados, e redobrar seus esforços para ajudar os membros mais frágeis da comunidade de língua portuguesa na grande Boston, Lowell a na região MetroWest. Nós não temos como agradecer-los o suficiente.

AQUI ESTÃO APENAS ALGUMAS das outras realizações da MAPS no ano passado:

- › Expansão do MassHealth e o respectivo acesso a informações e inscrições para clientes de baixa renda;
- › Fortalecimento da rede de parceiros do Programa de Violência Doméstica da MAPS em nossas áreas de atuação, aumentando visibilidade e esforços para defesa de vítimas;
- › Contratação de mais um Educador de Saúde para a equipe do escritório de Framingham, para ensinar homens brasileiros e latinos na região MetroWest sobre prevenção ao HIV e à AIDS;
- › Continuação da cruzada contra o câncer de mama em nossas comunidades por meio de educação, prevenção e encaminhamentos para exames e acompanhamento médico na grande Boston e em Framingham;
- › Conclusão do projeto Promotoras de Saúde, em parceria com o Lowell Community Health Center, treinando mulheres da comunidade para disseminar informações importantes de saúde entre seus amigos e parentes;
- › Implementação de uma bem-sucedida campanha de cidadania, educação e registro de eleitores para a eleição presidencial de 2008, e convite à comunidade para acompanhar conosco a histórica cerimônia de posse pela televisão;
- › Expansão do nosso Programa de Soluções de Eficiência Energética para Pequenos Negócios, em parceria com a NSTAR;
- › Realização da nossa mais bem-sucedida festa de Gala de todos os tempos, que ocorreu em Boston em maio, seguida por *homem*, uma conferência informativa que debateu questões pertinentes aos homens de língua portuguesa, e foi realizada em junho em parceria com a UMass Boston, CPCU Credit Union, Boston Portuguese Festival e nosso comitê organizador liderado pela Dra. Ana Nava;
- › Lançamento do novo website da MAPS, bem como de folhetos e boletins renovados; e
- › Elaboração e realização de uma série de eventos – do Café Criola em Dorchester às Mini-Feiras de Saúde em Lowell e em outros escritórios da MAPS – que envolvem a comunidade e os estimulam a cuidar da saúde.

COM A PROXIMIDADE DO ANO de nosso 40º aniversário, em 2010, nós enfrentamos uma série de novos desafios fiscais. Mas há também grandes oportunidades para ajudar as comunidades brasileira, cabo-verdiana e portuguesa. Talvez a maior delas seja o apoio total e irrestrito ao Censo dos Estados Unidos, a ser realizado no mês de abril. A contagem completa é absolutamente essencial para garantir que o estado de Massachusetts seja representado no Congresso em sua totalidade, e receba uma justa parcela de recursos federais para todos os serviços que tanto imigrantes quanto seus vizinhos necessitam – desde educação e acesso à saúde à segurança pública e assistência habitacional.

É por isso que a MAPS firmou parceria com vários outros líderes comunitários para formar a rede estadual do Comitê de Contagem Completa em Língua Portuguesa (Portuguese-Speaking Complete Count Committee – PSCCC) em Massachusetts. Nossa missão é garantir que TODOS os falantes de Português sejam contados, e que ninguém tenha medo de preencher o formulário do Censo. Para mais informações, acesse a página do PSCCC no site www.maps-inc.org, e participe dessa importante campanha cívica.

Esperamos trabalhar com vocês durante o próximo ano!

Paulo Pinto, MPA
Diretor Executivo

Joseph J. Vasconcelos
Presidente da Diretoria



Paulo Pinto

Dear friends and supporters,

IN A TIME WHEN NONPROFITS across the country are laying off staff, paring back services, and anxiously scanning emails for funding cuts, you might expect a large measure of painful news in this annual letter to the community. But as we look back on the past fiscal year, we are instead immensely proud of how much MAPS has accomplished and the solid financial position our auditors have reported to start FY 2010.

We closed the year in June with a projected \$150,000 surplus that will help us stay the course for the next round of state budget cuts predicted in the coming months. That speaks volumes for the incredible dedication and support demonstrated by our staff, Board of Directors, volunteers, funders, and donors.

Faced with cuts in several key programs, they simply vowed to work longer hours, give more of their own limited time and money, and redouble their efforts to serve the most fragile members of the Portuguese-speaking community throughout greater Boston, Lowell, and the MetroWest area. We can't thank them enough.

HERE ARE JUST A FEW of MAPS' other achievements over the past year:

- › Expanding MassHealth and related insurance outreach and enrollment for low-income clients;
- › Strengthening the MAPS Domestic Violence Services Program's partner network throughout our service area, increasing visibility and advocacy efforts;
- › Adding an extra part-time Health Educator to the Framingham office team, to teach more high-risk Brazilian and Latino men in MetroWest about HIV/AIDS prevention;
- › Continuing the crusade against breast cancer in our communities through targeted education, prevention, and referrals to screening and health care in greater Boston and Framingham;
- › Completing the Promotoras de Saúde (Health Promoters) project with the Lowell Community Health Center, training local women to share important health information with friends and family;
- › Implementing a successful citizenship, voter education and registration campaign for the 2008 Presidential election, and inviting the public to share the televised historic Inauguration with us;
- › Expanding our Energy Efficiency Solutions for Small Businesses Program in partnership with NSTAR;
- › Holding our most successful Gala ever this past May in Boston, and following that with *homem*, an informative June conference on Portuguese-speaking men's issues in partnership with UMass Boston, the CPCU Credit Union, the Boston Portuguese Festival, and our organizing committee led by Dr. Ana Nava;
- › Launching a new agency website along with freshly updated brochures and newsletters; and
- › Designing and hosting a variety of events — from the Café Criola in Dorchester to the mini-Health Fairs in Lowell and other MAPS offices — that engage community members and encourage them to stay healthy.

AS WE APPROACH OUR 40TH Anniversary Year in 2010, we are facing a host of new fiscal challenges. But there are also great opportunities to help the Brazilian, Cape Verdean and Portuguese communities. Perhaps the greatest of these is to join together in solid, uncompromising support of the United States Census to be taken this coming April. A complete count is absolutely essential to ensure that Massachusetts is fully represented in Congress and gets its fair share of federal funding for all of the services that immigrants and their neighbors need — ranging from education and health care to public safety and housing assistance.

That's why MAPS has partnered with many other community leaders to form a statewide Portuguese-Speaking Complete Count Committee (PSCCC) for Massachusetts. Our goal is to insure that EVERY Portuguese speaker gets counted, and that no one needlessly fears filling out the Census form. For more information, please visit the PSCCC page at www.maps-inc.org, and join this important civic campaign.

We look forward to working with you during the coming year!

Sincerely,

Paulo Pinto, MPA
Executive Director

Joseph J. Vasconcelos
President, Board of Directors

Annual Report 2009

Relatório Anual de 2009

Lois Josimovich

Director of Development & Communications
Diretora de Desenvolvimento & Comunicações

Michael Trindade DeRamo

Editor | Editor

Renan Leahy

Translations | Traduções

SERVICES

MAPS is the only organization that offers linguistically and culturally competent services for Portuguese speakers. The figures below show the scope of the services we provided in the past year.

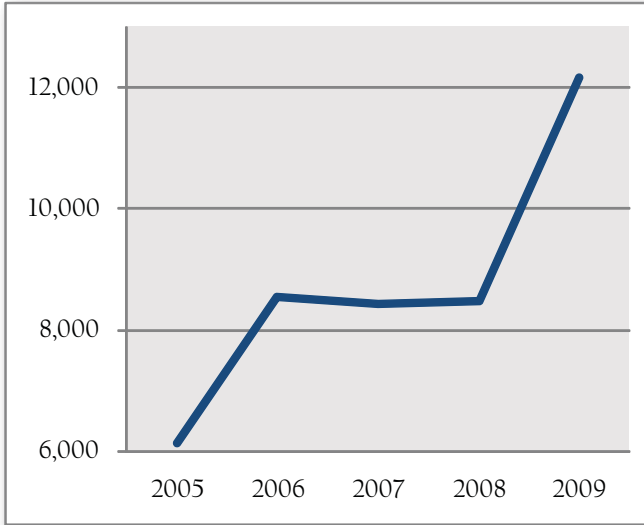
A MAPS é a única agência que oferece serviços para pessoas de língua portuguesa de maneira linguística e culturalmente adequada. As figuras abaixo mostram a variedade de serviços que prestamos no ano passado.



For more information on these services, please visit our website at www.maps-inc.org.

Service Serviço	Clients Clientes
HIV Prevention & Education for Men <i>Prevenção & Educação em HIV (VIH) para Homens</i>	4,471
HIV Prevention & Education for Women <i>Prevenção & Educação em HIV (VIH) para Mulheres</i>	3,165
Immigrant Social Services <i>Serviços Sociais para Imigrantes</i>	1,672
MassHealth Outreach & Enrollment <i>Informações & Inscrição para MassHealth</i>	849
Citizenship Assistance <i>Assistência à Cidadania</i>	321
Health Promoters Program (Lowell) <i>Promotoras de Saúde (Lowell)</i>	309
Domestic Violence Services <i>Serviços de Violência Doméstica</i>	292
Breast Cancer Prevention <i>Prevenção do Câncer de Mama</i>	250
Elder Services <i>Serviços para a Terceira Idade</i>	203
Energy Efficiency for Small Businesses <i>Soluções de Eficiência Energética para Pequenas Empresas</i>	145
HIV Counseling & Testing <i>Aconselhamento & Teste de HIV (VIH)</i>	114
Family Support Services <i>Serviços de Apoio às Famílias e Crianças</i>	113
Youth Program (Dorchester) <i>Programa de Jovens (Dorchester)</i>	112
Driver Alcohol Education <i>Educação sobre Álcool para Motoristas</i>	64
ESOL Courses <i>Cursos de Inglês para Falantes de Outras Línguas</i>	34
HIV/AIDS Case Management <i>Acompanhamento de Casos de HIV/AIDS (VIH/SIDA)</i>	28
Batterer Intervention Program <i>Programa de Intervenção de Agressores</i>	18
HIV Mental Health Project <i>Projeto de Saúde Mental em HIV (VIH)</i>	10
Total	12,170

Number of Clients Served, 2005-09
 Número de Clientes Atendidos, 2005-09



A YOUNG MOTHER was picked up by ICE over the weekend. A relative of hers came to MAPS frantically looking for help. Kate Lessard, Lowell Office Manager, was ready to assist. After numerous phone calls, a great dose of persistence, and the right connections, Kate was able to reunite the mother with her young child. You can just imagine the relief Kate brought to this family! Thanks to Kate for all the time she takes to host MIRA's trainings at our Lowell office – it paid off big time.

— Osvalda Rodrigues, Director of Family Services & Lowell Office Director

ONE OF THE YOUNG CAPE VERDEAN MEN in our youth program was engaging in high-risk behaviors — having unprotected sex with multiple partners, skipping school, drinking, and smoking marijuana. He knew he was taking risks, but he was not yet ready to make changes in his life. Then he was hit with a paternity scare, and his grades slipped. He was contemplating dropping out of school.

He came to me and finally decided to implement all we had been talking about. He realized that although he had not fathered a child, he could have; he could have contracted an STI or HIV as well. Being so grateful, he decided to take it upon himself to ensure the same things didn't happen to any of his friends. He started taking condoms back to his friends, and made sure everyone had some before going out at night. He also decided to continue his education. He had me attend a meeting with his school principal to help him sort out his options. He will be making up his lost credits by going to night school. He has a renewed focus, and sees that although hanging out and partying was a lot of fun, it also jeopardized his future.

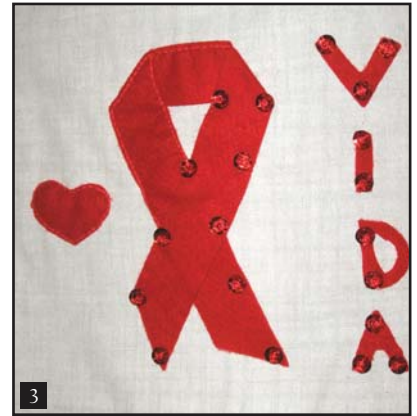
— Lyzz Almeida,
 Youth Program Supervisor, Dorchester office

UN RAPAZ CABUVERDIANU qui bem pa nos programa staba envolvidu na atividadis di altu risku — staba ta ten sexu sen proteçon e cu tcheu parceras, el staba ta falta scola, ta bebe e ta fuma padja. El sabeba di tudu riskus que el staba ta cor-reba, ma el ca staba prontu para fazê mudanca na se vida. El passa pa un sustu de qui el staba ta bem ser pai e el staba ta tem maus notas na scola. El pensa na dexa scola.

El procuran e finalmente el decidi faze tudu ques cusas qui nu tinha conversadu. El percebe qui mesmo qui e ca staba ta bem ser pai ma podia ter contecido. El podia ter panhadi doenca sexualmenti transmitidu o HIV. El fica bastanti gratu pamodi nada ca contece kuel e el dicide assumi responsabilidadi di garanti qui nada ca ta conteci cu ses amigus. El cumeça ta leba camisinha pa ses amigus e sempri qui el ba pa fora di noti el ta leba alguns kuel. El leban pa scola pa reuniau cu Diretor pa djudal na scodje medjor caminhu. El sta ta studa di noti pel pode recupera ses creditus qui el perdi pamodi el falta scola. Agora se atençan sta viradu pa cusas dreto e el percebe qui embora saí cu amigos i ba pa festa ê divertidu ma també se futuru staba ameasadu.



YEAR IN PICTURES



(1) Interview at *homem* men's conference
 (2) Lowell Open Door event, Feb. '09
 (3) Square from MAPS' AIDS Quilt
 (4) Maria Matos & Lois Josimovich recognized for 20 years of service
 (5) Cape Verdean Independence Day '09
 (6) MAPS men take White Ribbon Day pledge against domestic violence, Feb. '09
 (7) Martha Vasconcellos receives Women's Bar Foundation award
 (8) MAPS team battles breast cancer at the Susan G. Komen Race for the Cure
 (9 & 10) Board Member Marcony Almeida & Kate Lessard received Brazilian Immigrant Center awards
 (11) MAPS' Boston Pride parade float
 (12) MAPS' Walk for Hunger team
 (13) Maristela Tosato receiving advocacy award at UMass Lowell, Oct. '08



5

11

12

13

MAPS' 16th ANNUAL

AWARDS GALA



RED CARPET



Saturday, May 9, 2009
Hilton Boston Logan Airport

Jorge Fidalgo
Community Service Awards
Rhea Tavares
Maria José Soares
Maria dos Santos

Mary & Manuel Rogers
Lifetime Community Service Award
Jack Hamilton

Manuel N. Coutinho
Outstanding Volunteer Award
Elisa Garibaldi

Person of the Year Award
Boston Mayor Thomas M. Menino

For more information on past and upcoming Galas, please visit www.maps-inc.org.

Photos by Suzana Bucciarelli



STAFF

Cambridge Office

Paulo Pinto, MPA
Lois Josimovich
Beatriz Maimone, LICSW
Peter Fernandes, MBA
Lucinda Morais
Deolinda DaVeiga
Maria Matos
Martha Vasconcellos, M.Ed.
Antônia Alves
Júnior Catão
Soledade Dinis, MS
Júlia Evora
Alírio Mendes Pereira

Thais Neiva
Renan Leahy
Michael Trindade DeRamo

Executive Director
Director of Development & Communications
Director of Clinical & Support Services
Manager of Finances & Operations
Office Manager & HR Coordinator
Administrative Assistant
Supervisor of Immigrant Social Services Programs, Boston area
Supervisor of Domestic Violence Program, Boston area
AIDS Case Manager & DAE Coordinator
HIV Mental Health Case Manager
Supervisor of Family & Child Services Program
Senior Center Coordinator
Batterer Intervention Program Coordinator, Family & Child Social Worker,
DAE Facilitator
Health Educator, Breast Cancer Prevention Program
Communications & Citizenship Coordinator
Development Assistant

Allston Office

Anabela C. Quelha, MSC
Marcelo Carboni
Norma Malkiel
Paula Bronzoni
Suzana Bucciarelli
Henrique Oliveira
Mirna Festi

Director of Disease Prevention & Education Programs
Office Manager
Supervisor of Disease Prevention & Education Programs
Immigrant Case Worker
Health Communications Specialist
Men's Health Educator
Men's Health Educator & NSTAR Program Coordinator

Dorchester Office

Maria Gomes
Dulce DePina
Donna Landry-Rodrigues
Dulce Almeida Mendes
Lyzz Almeida
Gisela Rodrigues

Office Manager
Domestic Violence Prevention Advocate
Immigrant Case Worker
Women's Health Educator
Youth Program Supervisor
Youth Program Coordinator

Lowell Office

Osvalda Rodrigues, MA
Kate Lessard
Filomena Fagundes
Maristela Tosato

Director of Family Services, Director of the Lowell Office
Domestic Violence Prevention Advocate & Office Manager
Office Assistant
Immigrant & Elder Social Services Case Worker, Women's Health Educator

Framingham Office

Washington Ramos
Carlos Cruz
Gabriel Roncancio
Cristiano Amorim

Office Manager & Men's Health Educator
Health Insurance Access Coordinator
Latino Health Educator
Portuguese & Latino Men's Health Educator

Somerville Office

Outreach Office for all programs – no staff based in this office

BOARD OF DIRECTORS

DIRETORIA



Officers | Oficiais

Joseph J. Vasconcelos
President | Presidente

Mary Ann Lomba, MBA
Vice-President | Vice-Presidente

Victor M. Do Couto, MMHS
Treasurer | Tesoureiro

Carmen Pacheco Medeiros, MA
Secretary | Secretária

Members | Membros

Marcony Almeida — Elisabeth Chaves — Sarah De Oliveira — Elisa Garibaldi
Antero Lomba — Isaac M. Machado, Esq. — Mary Lu Mendonça, Esq.
Stephen Pereira, M.Ed. — Tina Silva — Rhea Tavares

VOLUNTEERS

VOLUNTÁRIOS

Adelia Lopes
Adriana Lobo
Aldarico Oliveira
Aldo de Oliveira
Alex Zaiken
Alexandra Krauszwk
Alison Nugent
Allison Smith
Ana Morais
Andy Vieira
Antonio Dias
Antonio Nascimento
Blass Cruz
Brian Soares
Bruno
Carlos Soares
Cecilia Clark
Celeste Landry
Cesar Carvallal
Christiniana
Christopher Bell
Claudio B.
Danni Bahia
Darleen Bonislwaski
Debora
Dereck Rafeldt
Dolores
Dyego Capixaba
Dyego Santana
Eddir Saviano
Elinete Pereira
Elisabeth Looney
Elvio Santos
Enna Belt

Eriv Levine
Esmeralda Almeida
Eva Jacobs
Fatima Carlos
Fernando
Gabriel Roncancio
Gabriela Hernandez
Hannah Siegel
Humberto La Cruz
Jackie Robinson
Jane Macoris
Janet Josimovich
Jayant Kairam
Jillian Ferraro
Josias Monteiro
Juarez Junior
Jucelia Oliveira
Júnior Catão
Kate Latta
Karen Armstrong
Laila Festi Pereira
Larissa Barbosa
Lucinda Cerqueira
Luis Matos
Luis Soares
Luisa Maria Rodrigues
Marcelo Knapik
Marcia Melo
Marcio
Margarethe Mattos
Maria Cunha
Maria Fatima Carlos
Maria Guimaraes
Maria Jampa

Maria Pinheiro
Marieta Laranjo
Marni Weiner
Mauro Paggioli
Michelle Johnson
Monica Fagundes
Ney Andrade
Paula Coutinho
Paulo Roque
Paulo Vicente
Poliana Figueiredo
Renan Leahy
Robert Fernandes
Robert Schmidt
Sam Sanders
Sana Blumenthal
Sergio Ianelli
Shenon
Sideval A. Borges
Sidney Chambers
Sidney DeGois
Silvania Campos
Silvio Tancredo
Suzan Dias
Thiago Santana
Thomas Pouncy
Todd Garcelon
Wagner Silva

As of October 1, 2009

*A partir de primeiro
de outubro de 2009*

MAJOR SOURCES OF FUNDING

Public Contracts | Contratos Governamentais

Boston Police Dept. (Family Justice Center)
 Boston Public Health Comission/Ryan White CARE Act
 Boston Community Development Block Grant
 Cambridge Community Development Block Grant
 Elder Services of the Merrimack Valley
 Lowell Community Development Block Grant
 Mass. Dept. of Children and Families
 Mass. Dept. of Public Health

Mass. Executive Office of Public Safety/VAWA
 MassHealth (Mass. Office of Medicaid)
 Mass. Office for Refugees and Immigrants
 Somerville Affordable Housing Trust Fund
 Somerville-Cambridge Elder Services
 Somerville Community Development Block Grant
 US Substance Abuse & Mental Health Services Admin./
 Cambridge Health Alliance

Corporate & Other Major Donors | Empresas & Outros Grandes Doadores

Americo J. Francisco Fund
 Axa Advisors
 Axial Benefits Group
 Blue Cross & Blue Shield of Mass. Foundation
 Bob & Joanne Perry
 Boston Medical Center HealthNet Plan
 Boston Private Bank & Trust Co.
 Brazilian Women's Group
 Broadway Cares/Equity Fights AIDS
 Brothers Supermarket
 Bushrod H. Campbell & Adah F. Hall Charity Fund
 Cambridge Community Foundation
 Cambridge Health Alliance
 Cambridge Savings Bank
 Citizens Bank
 CompNet Solutions
 Consulate of Portugal in Boston
 Couto Management Group
 CPCU Credit Union
 Draper Laboratory
 Dudley Street Neighborhood Initiative
 East Cambridge Savings Bank
 Eastern Bank Charitable Foundation
 Gisele Bundchen
 Greater Lowell Community Foundation
 Harvard Pilgrim Health Care

Heinz Family Foundation
 Institute for Community Inclusion
 Jimmy Fund/Dana Farber Cancer Institute
 John M. Mello Jr., Advogado e Conselheiro
 Kane Square Physical Therapy
 Lamberts Rainbow Fruit
 Leclair Foundation
 Lowell Community Health Center
 Luso American Life Insurance Society
 MAPS Board of Directors
 Neighborhood Health Plan
 Network Health
 NStar
 Project Bread/The Walk for Hunger
 Riverside Management Group/Dunkin Donuts/
 Baskin Robbins
 Robert Wood Johnson Foundation
 Rockefeller Financial Services/JB Fernandes Trust
 Rogers Funeral Home & Cremation Services
 SafeStreets Boston
 Sailor's Snug Harbor of Boston
 Susan G. Komen for the Cure
 TJX Foundation
 Unicco
 United Way of Massachusetts Bay &
 Merrimack Valley

Endowment | Fundo de Doações

Fund Fundo	Purpose Propósito	Balance Saldo
General Fund	Operations	\$50,805.40
Board of Directors Fund	Operations	\$2,279.34
Lowell Office Fund	Lowell operations	\$10,942.48
Teresa Afonso Scholarship Fund	Scholarship for Portuguese-speaking students	\$2,841.51
Coutinho Citizenship Fund	Citizenship services	\$6,954.30
Josefina Brandão Silva Family Fund	Youth services	\$2,919.83
Raul & Maria Pinto Family Fund	Elder services	\$3,043.86
Robert & Joanne Perry Family Fund	Civic activism & community empowerment	\$17,850.09
Aquilino Almeida Fund	Social services	\$1,297.53
Humberto Martins Senior Center Fund	Elder services	\$9,482.26
Manny Rogers Family Fund	Elder services	\$2,434.78
Dr. Arnhold Legal Advocacy Fund	Immigrant support & social services	\$948.24
<i>Total Endowment</i>		\$111,799.62

CLIENT PROFILE

PERFIL: CLIENTES



FY 2009 Ano Fiscal 2009	Clients Served Clientes Atendidos
Gender Sexo	
Male Masculino	6,148
Female Feminino	6,022
Idade Age	
Under 18 Abaixo de 18	674
18 – 59	10,673
60+	823
Race/Ethnicity Grupo Étnico	
African American Afro-americano	153
Brazilian Brasileiro	7,598
Cape Verdean Caboverdeano	2,132
Other African Outros Africanos	322
Caucasian American Americano Europeu	44
Latino	493
Portuguese Português	1,243
Other/Unknown Outro/Desconhecido	185
City of Residence Cidade de Residência	
Boston (all neighborhoods)	5,200
Allston & Brighton	2,759
Dorchester & Roxbury	2,104
Other Boston	337
Cambridge	946
Everett	154
Framingham	925
Lowell	1,907
Malden	95
Marlborough	293
Medford	77
Somerville	1,587
Watertown	209
Other/Unknown Outro/Desconhecido	777
Total	12,170

FINANCIAL PROFILE

PERFIL: FINANÇAS

STATEMENT OF FINANCIAL ACTIVITIES | RELATÓRIO FINANCEIRO

For the Year Ended June 30, 2009 | Referente ao Ano Fiscal Acabado a 30 de Junho, 2009

UNRESTRICTED REVENUES, GAINS, OTHER SUPPORT | RECURSOS, GANHOS E OUTROS APOIOS

Receitas de Contractos	Contract Revenue	\$1,926,066
Verbas e Contribuições	Grants and Contributions	258,095
Angariação de Fundos	Fundraising	125,332
Receitas de Aluguel	Rental Income	10,000
Quotas de Membros	Membership Fees	1,458
Receitas de Juros	Interest Income	8,477
Receitas dos Programas	Program Fees	61,152
Perdas nos Investimentos (Fundo de Doações)	Unrealized Loss on Investments (Endowment)	(18,082)
Voluntários e Donativos	In-Kind Revenue (Volunteer Time and Donated Goods)	48,617
Receitas Várias	Miscellaneous Income	840
Total Unrestricted Revenues, Gains and Other Support		\$2,421,955
Total dos Recursos, Ganhos e Outros Apoios Financeiros		\$2,421,955

EXPENSES | DESPESAS

Custos de Programas	Program Services	\$1,927,693
Custos Gerais e Administração	General and Administration	305,979
Despesas de Angariação de Fundos	Fundraising	33,051
Total Expenses		\$2,266,723
Total de Despesas		\$2,266,723

CHANGE IN NET ASSETS MUDANÇAS EM CAPITAL LÍQUIDO	\$155,232
NET ASSETS, BEGINNING OF THE YEAR CAPITAL LÍQUIDO INICIAL	\$336,490
NET ASSETS, END OF THE YEAR CAPITAL LÍQUIDO FINAL	\$491,722

Audited by Kelly-Eitel & Associates, LLC

A Missão da MAPS

A missão da MAPS é servir os membros das comunidades de língua portuguesa e seus descendentes em Massachusetts e ajudá-los a tornarem-se contribuidores activos e participantes na sociedade americana mantendo ao mesmo tempo uma forte identidade étnica e um senso de comunidade. A MAPS procura aumentar o acesso e diminuir as barreiras para serviços sociais, de saúde e educacionais através de assistência direta, defesa, liderança e desenvolvimento da comunidade.

Sobre a MAPS

A Massachusetts Alliance of Portuguese Speakers (MAPS) é uma organização privada, sem fins lucrativos, com base comunitária, que vem proporcionando uma variedade de serviços sociais e de saúde para indivíduos de língua portuguesa, e outros residentes do leste de Massachusetts desde 1970. A maioria dos clientes são do Brasil, Cabo Verde e Portugal. Os escritórios estão localizados no coração das comunidades de língua portuguesa de Cambridge, Somerville, Boston, Framingham e Lowell.

The MAPS Mission

MAPS' mission is to improve the lives of Portuguese-speaking individuals and families from Massachusetts and help them become contributing, active participants in American society while maintaining strong ethnic identity and a sense of community. MAPS works to increase access and remove barriers to health, education and social services through direct services, advocacy, leadership and community development.

About MAPS

The Massachusetts Alliance of Portuguese Speakers (MAPS) is a private, non-profit, community-based organization that has provided a wide range of health and social services to Portuguese speakers and other residents of eastern Massachusetts since 1970. Most of MAPS' clients are from Brazil, Cape Verde or Portugal. Agency offices are located in the heart of the Portuguese-speaking communities of Cambridge, Somerville, Boston, Framingham and Lowell.

MAPS Offices | Escritórios da MAPS

569 Cambridge St.
Allston, MA 02134
(617) 787-0557

1046 Cambridge St.
Cambridge, MA 02139
(617) 864-7600

One Stoughton St.
Dorchester, MA 02125
(617) 825-5897

24 Union Ave., Suites 8-10
Framingham, MA 01702
(508) 872-2652
(limited hours; please call)

11 Mill Street
Lowell, MA 01852
(978) 970-1250

92 Union Sq.
Somerville, MA 02143
(limited hours; please
call Cambridge office)



www.maps-inc.org

Providing services to the Portuguese-speaking community in partnership with:



of Massachusetts Bay and Merrimack Valley



The Charles Stark Draper Laboratory, Inc. generously donates the printing of the MAPS Annual Report.